



LED LIGHTING CATALOG

2020

IEBSA TECHNOLOGY NINGBO CO.,LTD



Overview

IEBSA Group was founded in 2013, is the national high-tech enterprises and a joint venture in Taiwan, America, Mexico and China, Located in Ningbo. IEBSA is a factory for Industrial & Public Lighting, providing services on designing, has been focused on PLEP chips and PCI heat sink technology, set up a PLEP Chip On Copper Board tech oriented R&D center, has a R&D team led by experts in the field of heat transfer technology.

All the products are UL/CUL/IEC/CE/RoHs/LM-80 certified

Partenrs



INVENTRONICS

PHILIPS

OSRAM



CREE

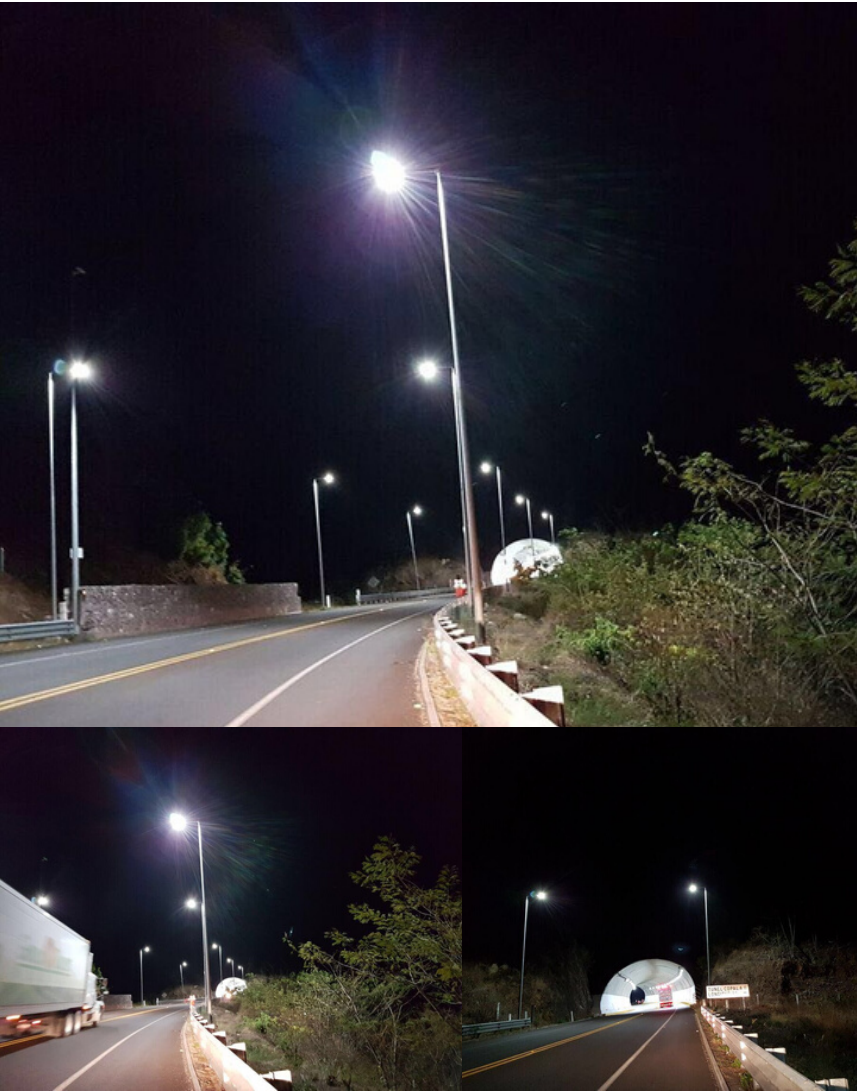
LUMILEDS

SAMSUNG

merrytek

HAISEN

RUILEON
ELECTRONICS



BENEFITS

- Non-yellowing, Optical Glass Lens
- UV Resistance
- Auto-working, Open at dusk, close at dawn
- Excellent Heat Dissipation ADC-12
- High Luminous 135-150Lm/w
- UL,CUL,CE,RoHs,IEC certificates
- IP67



Technical Parameter

Model	Power	Replacement	Input Voltage	Light Efficiency	CCT	CRI	Dimension (mm)
BSA-ST-DCT0030-501	30W	HPS100W	AC90-305V & 180-528V 50/60Hz	3900LM	1800-6000K	≥75	480x174x95
BSA-ST-DCT0050-501	50W	HPS150W		6500LM			
BSA-ST-DCT0080-501	80W	HPS250W		10400LM			600x235x100
BSA-ST-DCT0100-501	100W	HPS300W		13000LM			
BSA-ST-DCT0120-501	120W	HPS400W		15600LM			
BSA-ST-DCT0150-501	150W	HPS450W		19500LM			825x309x113
BSA-ST-DCT0180-501	180W	HPS600W		23400LM			



Self-cleaning

The smooth body would greatly diminish dust accumulation, and minimize environment impacts to the fixture's performance and lifespan.



Self-cleaning

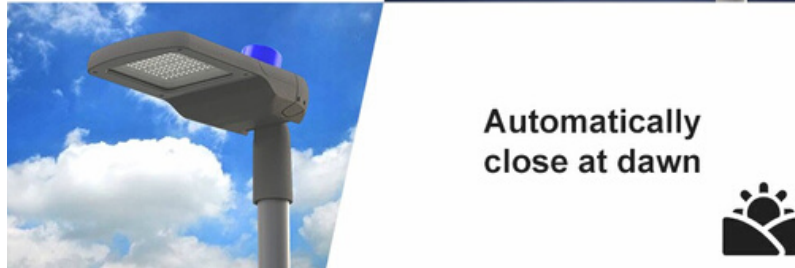
The dust will be washed away automatically by the wind and rain with the unique circular arc design and smooth surface, which is good for the lamp fixture heat dissipation when all the dust is gone away.



Waterproof and lightning proof suitable for any environment



Automatically open at dusk



Automatically close at dawn



BENEFITS

- Auto-working, Open at dusk, close at dawn
- Self-Cleaning
- Tool-free maintenance
- Adapter Adjustable
- Surge Protective 10Kv/20Kv
- Electric Switch ,Safety for maintenance
- Excellent Heat Dissipation ADC-12
- Toughed Glass
- CE,RoHs,IEC,LM-80 certificates



Technical Parameter

Model	Power	Replacement	Input Voltage	Light Efficiency	CCT	CRI	Dimension (mm)
BSA-ST-DCT0030-801	30W	HPS100W	AC90-305V & 180-528V 50/60Hz	3900LM	2100-6000K	≥75	558x200x243
BSA-ST-DCT0050-801	50W	HPS150W		6500LM			
BSA-ST-DCT0080-801	80W	HPS250W		10400LM			612x233x243
BSA-ST-DCT0100-801	100W	HPS300W		13000LM			
BSA-ST-DCT0120-801	120W	HPS400W		15600LM			
BSA-ST-DCT0150-801	150W	HPS450W		19500LM			
BSA-ST-DCT0180-801	180W	HPS600W		23400LM			
							775x320x250



BENEFITS

- Auto-working, Open at dusk, close at dawn
- Self-Cleaning
- Tool-free maintenance
- Adapter Adjustable
- Surge Protective 10Kv/20Kv
- Electric Switch ,Safety for maintenance
- Toughed Glass
- Excellent Heat Dissipation ADC-12
- CE,RoHs,IEC,LM-80 certificates

5&7
YEARS
WARRANTY

CE PS E CEC LM-80



Technical Parameter

Model	Power	Replacement	Input Voltage	Light Efficiency	CCT	CRI	Dimension (mm)
BSA-ST-DCT0030-701	30W	HPS100W	AC90-305V & 180-528V 50/60Hz	4050LM	2100-6000K	≥75	577x233x103
BSA-ST-DCT0050-701	50W	HPS150W		6750LM			
BSA-ST-DCT0060-701	60W	HPS200W		8100LM			
BSA-ST-DCT0080-701	80W	HPS250W		10800LM			627x271x103
BSA-ST-DCT0100-701	100W	HPS300W		13500LM			
BSA-ST-DCT0120-701	120W	HPS400W		16200LM			
BSA-ST-DCT0150-701	150W	HPS450W		20250LM			
BSA-ST-DCT0180-701	180W	HPS600W		24300LM			768x301x104



BENEFITS

- Toughed Glass
- UV Resistance
- Auto-working, Open at dusk, close at dawn
- Excellent Heat Dissipation ADC-12
- High Luminous 130-150Lm/w
- CB,CE,RoHs,IEC certificates

5&7
YEARS
WARRANTY



CE PS E CQC LM-80



Technical Parameter

Model	Power	Replacement	Input Voltage	Light Efficiency	CCT	CRI	Dimension (mm)
BSA-ST-DCT0030-601	30W	HPS100W	AC90-305V & 180-528V 50/60Hz	3900LM	2300-6000K	≥75	376x229x79
BSA-ST-DCT0050-601	50W	HPS150W		6500LM			
BSA-ST-DCT0060-601	60W	HPS200W		7800LM			608x351x102
BSA-ST-DCT0080-601	80W	HPS250W		10400LM			
BSA-ST-DCT0100-601	100W	HPS300W		13000LM			
BSA-ST-DCT0120-601	120W	HPS400W		15600LM			
BSA-ST-DCT0150-601	150W	HPS450W		19500LM			525x299x90
BSA-ST-DCT0180-601	180W	HPS600W		23400LM			

BENEFITS

- Installation on Wall, Pole
- Excellent Heat Dissipation ADC-12
- Air Breathers design, quick balance internal and external housing stress, reduce pressure of sealing strip
- Auto-working, Open at dusk, close at dawn
- Motion sensor, Timing, Dimming
- High Luminous 135-150Lm/w
- Small Packing :Save freight cost
- UL,CUL,CE,RoHS,IEC certificates



CE
RoHS

UL
US

STANDARD
5
WARRANTY



Outdoor
IP65

Technical Parameter

Model	Power	Replacement	Input Voltage	Light Efficiency	CCT	CRI	Dimension (mm)
BSA-GL-DCX0030-201	30W	HPS100W	AC100-277V 50/60Hz	3900LM	2300-6000K	≥75	345x563
BSA-GL-DCX0050-201	50W	HPS150W		6500LM			
BSA-GL-DCX0070-201	70W	HPS200W		7800LM			
BSA-GL-DCX0100-201	100W	HPS250W		10400LM			
BSA-GL-DCX0150-201	150W	HPS300W		13000LM			345x657



BENEFITS

- UV Resistance, Low Glare
- 2-In-1 installation: Street Pole, Y arm
- Self-Cleaning
- Tool-free and easy maintenance
- Toughed Flat Glass, Silicon Gasket
- Surge Protective 10Kv/20kv
- High Luminous 135Lm/w
- CE, RoHS, IEC certificates



Technical Parameter

Model	Power	Replacement	Input Voltage	Light Efficiency	CCT	CRI	Dimension (mm)
BSA-GL-DCX0050-401	50W	HPS150W	AC100-277V 50/60Hz	6500LM	2300-6000K	≥75	380x510
BSA-GL-DCX0070-401	70W	HPS250W		9100LM			
BSA-GL-DCX0080-401	80W	HPS300W		10500LM			



BENEFITS

- Non-yellowing, High Borosilicate Glass Lens, Toughed Flat Glass, Silicon Gasket, UV Resistance,
- IP67
- Excellent Heat Dissipation ADC-12, Between Radiator and Chips no barrier
- Easy maintenance
- High Luminous 135Lm/w
- UL, CUL, CE, RoHS, IEC certificates



IP67 LM-80



Technical Parameter

Model	Power	Replacement	Input Voltage	Light Efficiency	CCT	CRI	Dimension (mm)
BSA-GL-DCX0050-101	50W	HPS150W	AC90-305V 50/60Hz	6500LM	1900-6000K	≥75	450x605
BSA-GL-DCX0060-101	60W	HPS200W		7800LM			
BSA-GL-DCX0070-101	70W	HPS250W		9100LM			
BSA-GL-DCX0080-101	80W	HPS300W		10500LM			
BSA-GL-DCX00100-101	100W	HPS350W		13000LM			