



LED LIGHTING CATALOG

**2020**

IEBSA TECHNOLOGY NINGBO CO.,LTD



# Overview

IEBSA Group was founded in 2013, is the national high-tech enterprises and a joint venture in Taiwan, America, Mexico and China, Located in Ningbo. IEBSA is a factory for Industrial & Public Lighting, providing services on designing, has been focused on PLEP chips and PCI heat sink technology, set up a PLEP Chip On Copper Board tech oriented R&D center, has a R&D team led by experts in the field of heat transfer technology.

All the products are UL/CUL/IEC/CE/RoHs/LM-80 certified

## Partners



INVENTRONICS

PHILIPS

OSRAM

bridgelux

CREE

LUMILEDS

SAMSUNG

merrytek

HAISEN

RUILON  
ELECTRONICS

# High Mast Light



## BENEFITS

- UV Resistance, Low Glare
- Street Pole, Bracket, Round Bracket installation
- Excellent Heat Dissipation ADC-12
- 4 Air Breathers design, quick balance internal and external housing stress, reduce pressure of sealing strip
- High Luminous 135-150Lm/w
- UL, CUL, CE, RoHS, IEC certificates

5&7  
YEARS  
WARRANTY



LM-80 IP66



## Technical Parameter

Model	Power	Input Voltage	Power Factor	Light Efficiency	CCT	CRI	Dimension (mm)
BSA-FL-DCT0400-401	400W	AC90-305Vac/ 180-520Vac 50/60Hz	≥0.95	54000LM	2700-6500K	≥75	330*460*490
BSA-FL-DCT0500-401	500W			67500LM			330*460*490
BSA-FL-DCT0600-401	600W			81000LM			330*460*490
BSA-FL-DCT0800-401	800W			108000LM			380*620*645
BSA-FL-DCT1000-401	1000W			135000LM			380*620*645

# High Mast Light

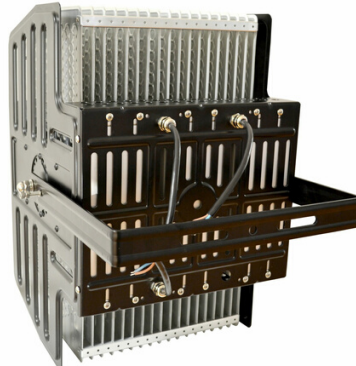
## BENEFITS

- Suitable Harsh Environment
- Non-Yellowing and UV Resistance by High Borosilicate Glass Lens
- Extremely Light Weight design
- Excellent Heat Dissipation PCI Radiator
- 90-270VAC ,180-520VACEasy to install
- Cree , Citizen Chips Meanwell driver
- UL,CUL,CE,RoHs,IEC certificates

5&7  
YEARS  
WARRANTY



LM-80 IP66



## Technical Parameter

Model	Power	Input Voltage	Power Factor	Light Efficiency	CCT	CRI	Dimension (mm)
BSA-FL-PCI0300-001	300W	AC90-305Vac/ 180-520Vac 50/60Hz	≥0.95	54000LM	2700-6500K	≥75	424*313*450
BSA-FL-PCI0500-001	500W			67500LM			424*313*450
BSA-FL-PCI0800-001	800W			81000LM			505*327*491
BSA-FL-PCI1000-001	1000W			108000LM			505*327*491

# Flood Light



## BENEFITS

- Intelligent working: Auto- turn on at dusk, Auto- turn off at dawn
- Excellent Heat Dissipation ADC-12  
90-270VAC ,180-520VAC  
Easy to install
- IP66,Air Breather, Quickly balance internal and external housing stress, reduce pressure of sealing strip
- UL,CUL,CE,RoHs,IEC certificates

5&7  
YEARS  
WARRANTY

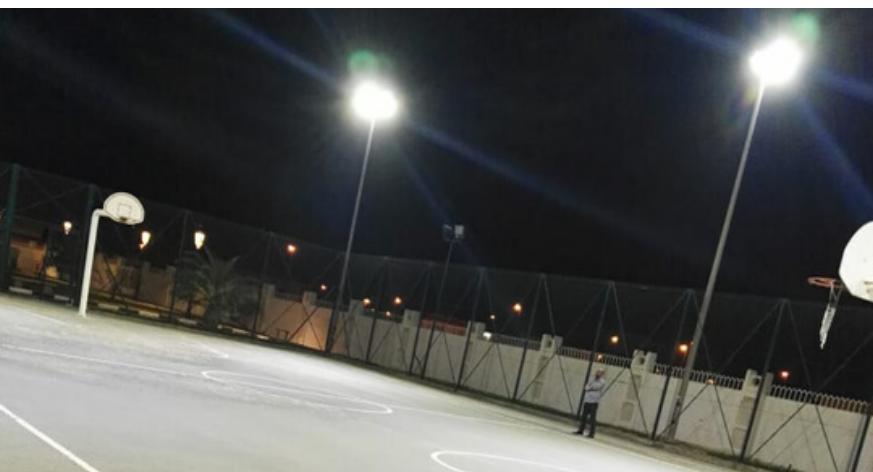


LM-80 IP66



## Technical Parameter

Model	Power	Input Voltage	Power Factor	Light Efficiency	CCT	CRI	Dimension (mm)
BSA-FL-DCT0050-501	50W	AC90-305Vac/ 180-520Vac 50/60Hz	≥0.95	6750LM	2700-6500K	≥75	346*200*65
BSA-FL-DCT0100-501	100W			13500LM			310*365*60
BSA-FL-DCT0150-501	150W			20250LM			365*365*60
BSA-FL-DCT0200-501	200W			27000LM			420*365*60
BSA-FL-DCT0300-501	300W			40500LM			590*387*63.5



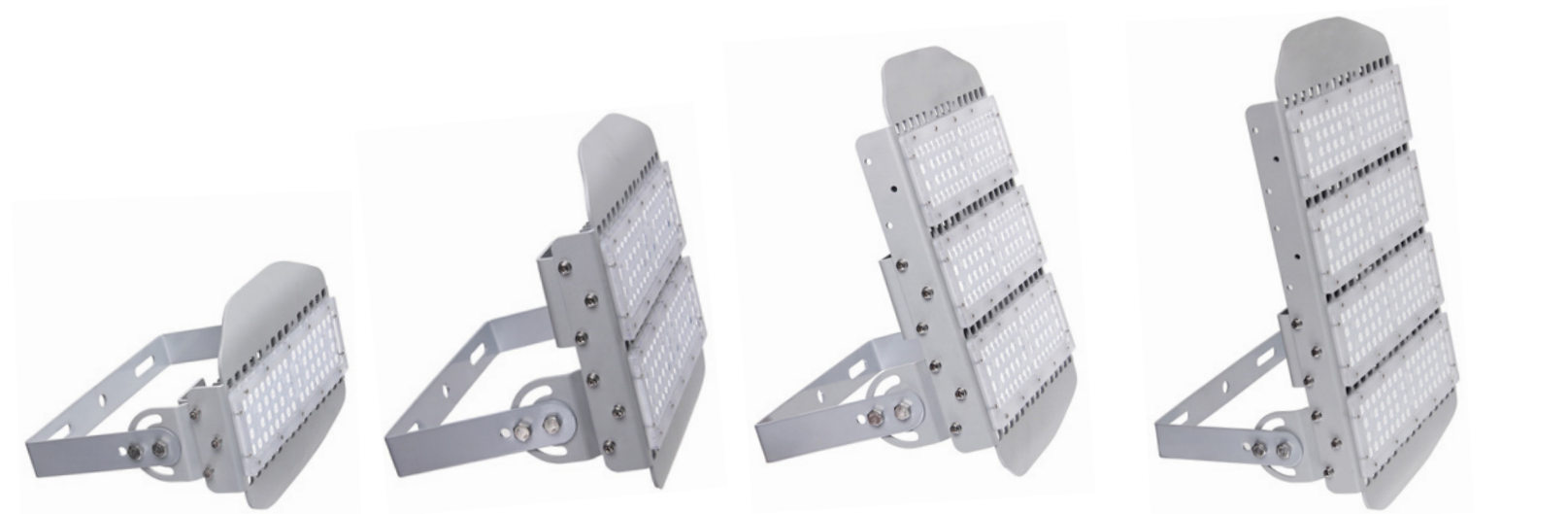
## BENEFITS

- 90-270VAC ,180-520VAC, Easy to install
- Excellent Heat Dissipation ADC-12
- Light Weight Design
- Diffused symmetrical optics, Asymmetrical optics, Symmetrical optics , 30°,60°,90°,30\*170°,60\*90°,60\*120°
- UL,CUL,CE,RoHs,IEC certificates

5&7  
YEARS  
WARRANTY

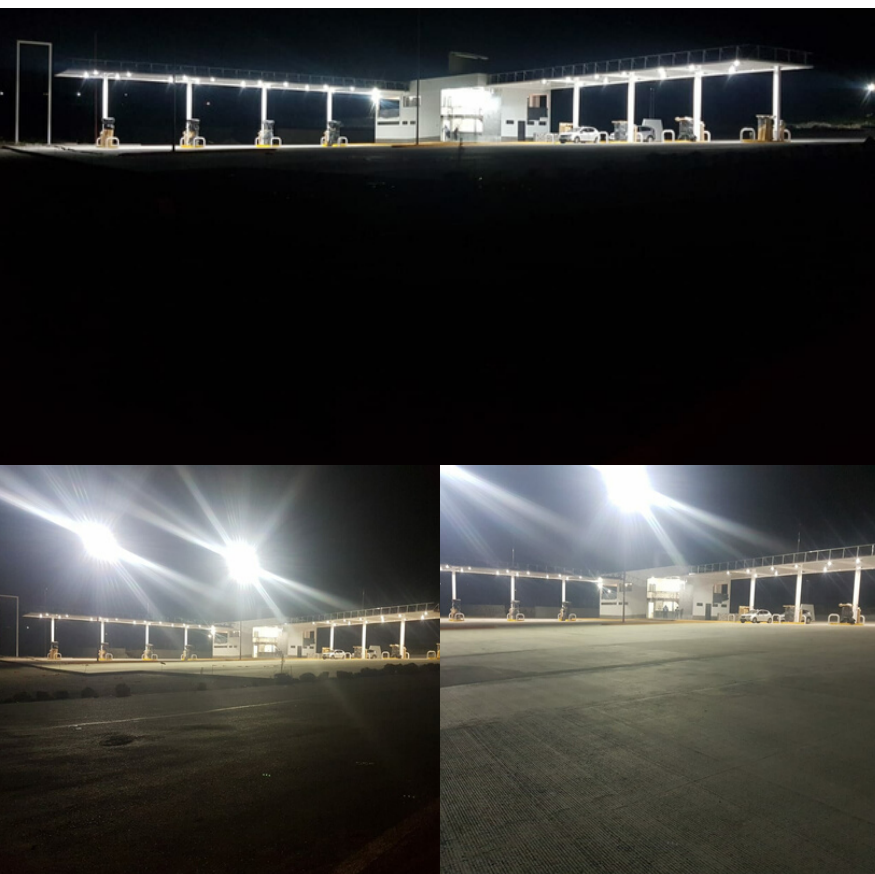


LM-80 IP66



## Technical Parameter

Model	Power	Input Voltage	Power Factor	Light Efficiency	CCT	CRI	Dimension (mm)
BSA-FL-DCT0050-301	50W	AC90-260V 50/60Hz	≥0.95	6500LM	2700-6500K	≥75	209*258*220
BSA-FL-DCT0100-301	100W			13000LM			298*258*220
BSA-FL-DCT0150-301	150W			19500LM			387*258*220
BSA-FL-DCT0200-301	200W			26000LM			476*258*220



## BENEFITS

- 90-270VAC ,180-520VAC, Easy to install
- Excellent Heat Dissipation ADC-12
- Light Weight Design
- Diffused symmetrical optics, Asymmetrical optics, Symmetrical optics
- CE,RoHs,IEC certificates

5&7  
YEARS  
WARRANTY



CE PSE CQC LM-80 IP66



### Technical Parameter

Model	Power	Input Voltage	Power Factor	Light Efficiency	CCT	CRI	Dimension (mm)
BSA-FL-DCT0010-001	10W	AC90-260Vac & AC180-520Vac 50/60Hz	≥0.95	1350LM	2700-6500K	≥75	181.8*122*46.8
BSA-FL-DCT0020-001	20W			2700LM			241.9*169*51
BSA-FL-DCT0030-001	30W			4050LM			282.3*220*51.8
BSA-FL-DCT0050-001	50W			6500LM			337.3*269*51.8
BSA-FL-DCT0100-001	100W			13000LM			324.9*365*56.8
BSA-FL-DCT0150-001	150W			19500LM			375.8*365*56.8
BSA-FL-DCT0200-001	200W			26000LM			426.5*365*58.8
BSA-FL-DCT0300-001	300W			40500LM			426.5*365*58.8